

concept narative



neutral



calm



fresh



relaxing



fun



playful



magical

case studies



weGrow

. by BIG architects . located in NYC . design for wellbeing .
. kindergarten and junior school .

BIG architects designed this space to encourage inquisitvity; with slatted structures to climb in and soft cushioned mounds on the floor to climb on. It has a very neutral pallette which takes inspiration from 'zen' concepts to create a calm atmosphere. WeGrow and BIG wanted to put design for wellbeing at the top of their priorities and have acheived that via said calming, friendly and welcoming atmosphere, combined with a space that encourages play and exploring.



aranya

. by ODD architects . located in China . design for wellbeing .
. childrens art and music classroom .

This example uses a very similar colour and material pallette to acheive the same effect of a calm and welcoming space. This example takes an even more toned down approach as even the walls are entirely made out of and clad in the same timber material. All the colours are very soft hues, creating a gentle and safe aesthetic. In addition to this, the rounded design language of the arches, circles and curved corners adds to the soft, flowing and organic feel to the space.

materials statement

The majority of my building will have a very SOFT and CALMING atmosphere, achieved by a NEUTRAL colour palette and the use of soft and TACTILE materials. The insertions, and the majority of the larger fittings and furniture will be PLYWOOD, to create a fresh and contemporary aesthetic. This will then be complemented by softer materials and fabrics, in GREYS, GREENS AND WHITE. This will work across the space; in the outer nursery area for the children, and the more generic spaces aimed at the mothers and staff (i.e. offices, kitchen, lounges and studio flats).

The space will be divided up by inserted forms, which will take the form of plywood clad structures. These will be fabricated from a metal frame, clad in large plywood sheets (2400 mm by 1200 mm). Most of them will be wide enough to create interior spaces which offer different zones of play for the children. The few that are not wide enough to create an interior space have activities happening on their face (such as 'window' and 'door' cut-outs, craft tables coming out from them etc.). They will vary in size and work as a series of fixtures throughout the atrium. As they are almost the same height as the building, thread bolts and steel tension rods will be used to keep them secure.

Within the space, there will be 'POCKETS' of much BRIGHTER spaces; much more fun, EXCITING and stimulating. These will be located inside the inserted elements as these are very much the children's spaces. These will take inspiration from the idea of entering a 'fairy-tale' land. They will still have plywood as a base but will use a range of BRIGHT COLOURS and GRAPHICAL ELEMENTS AND IMAGERY to create the more vibrant atmosphere.

zoning diagram

Across the space there are two different schemes in play, the space is divided into 'ordinary' spaces (a neutral colour scheme of plywood, grey, green and white), and 'extraordinary' spaces which are bright and fun and use bold imagery.

This set of plans of the building show the ordinary spaces and extraordinary spaces.



Not to scale

'ordinary' spaces
moodboard



'extraordinary' spaces
moodboard



colour rationale

The main colours used throughout the space will be tones of GREY, GREEN, WHITE AND 'PLYWOOD'. Together, these create a very NEUTRAL PALETTE. These colours have been chosen so as to create a CALMING ATMOSPHERE; inspired by ZEN spaces. The reasoning behind this is two-fold; firstly, as it is so neutral it can work to anyone's taste, for both 'child' and 'adult' spaces. Secondly, it has calming connotations which is important for the users of the spaces as it is highly likely the users will be dealing with other stress and tension in their lives, so it is essential that this is a space that makes them feel safe, comforted and relaxed.

The green is used to INJECT COLOUR into the sea of ply, grey and white. The green is used sparingly so that, when it is used, it stands out and creates contrast. The white is mainly found just in the form of white painted walls. The greys and greens can be found in the form of upholstery (fabrics) and, on occasion, painted surfaces.

As a strong contrast, the interior of the inserted elements have a very different colour palette. These are heavily themed spaces, using the notion of 'fairy-tales', and use bold graphical imagery (graphically printed wallpaper and textiles), as well as painted or coloured objects and furnishings, to create BRIGHT and VIBRANT spaces. These spaces will therefore be incredibly MULTI-COLOURED.

colour palette

plywood



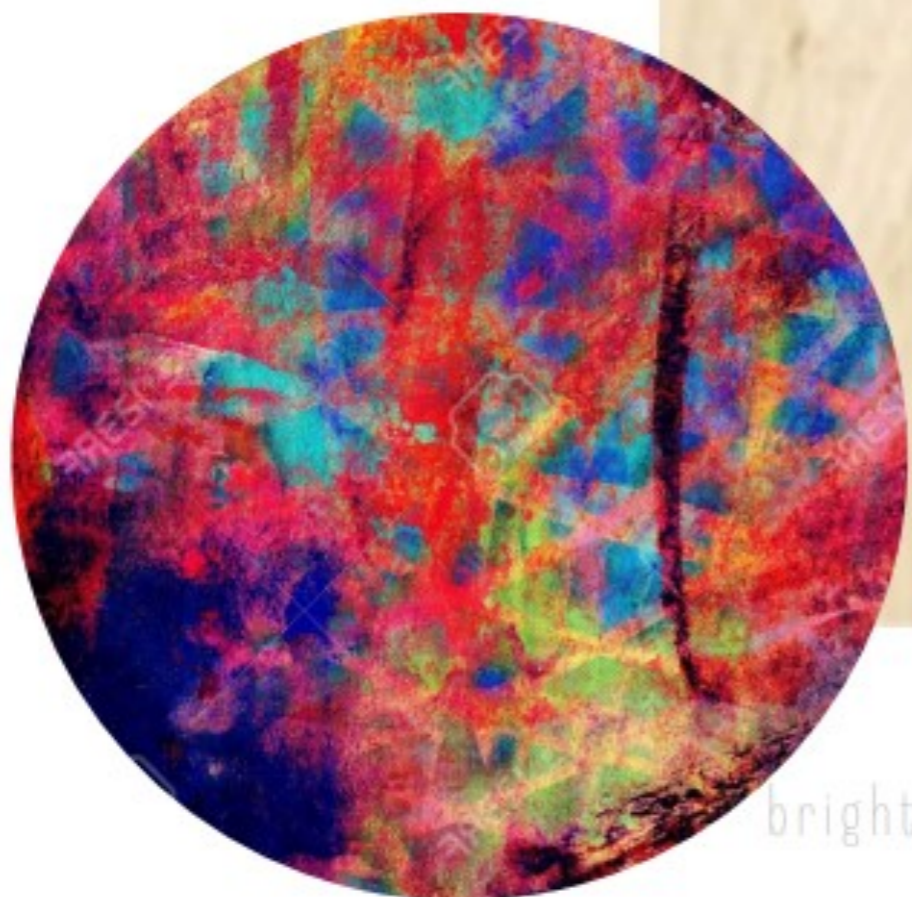
white



green



grey



bright & colourful

sustainability statement

Adaptive re-use of a building is a sustainable approach. In keeping with the philosophy of adaptive reuse, it has been decided to keep all the original building structure, and adding to it where necessary to achieve the aims of the project.

Adding to the sustainability of the project is the choice of plywood for most of the internal construction. The chosen material is a formaldehyde free, soft wood that has been responsibly sourced. Furthermore, it is a durable material that doesn't wear, is hence long lasting, and is of course easily recyclable.

The metal chosen for the framework will be sourced from a reputable supplier, and it is obviously a very long life product that is also easily reused and recyclable.

The aim of the project is to keep the use of plastics to an absolute minimum. This is to limit the risk of toxins that can come from plastics and to maintain the emphasis on the more natural effect of wood. Any plastic used (most likely to be in the form of toys and play equipment for the children) will be carefully chosen with regards to its ethical production and reusability.

All paint used in the project will be toxic-free and adhering to stated standards. It will be reasonably sourced and not emit fumes.

Fabrics for the soft furnishings and curtains will be carefully selected making sure the material is natural and not dyed with toxic chemicals. This will not only add to the minimal environmental impact of the project, but also mean they are recyclable when they come to their end of life.

Finally a major aspect to this project is mental wellbeing and creating a strong community. The users of this space (teenage mothers) often experience extreme loneliness throughout this experience (of becoming a young mother and raising a child whilst still a teenager) and lack emotional support. The main purpose of this project is to give these people a space where they can get the emotional support they need to look after their mental wellbeing, and create a supportive and caring community with others that they can relate to and sympathise with, and share the same priorities.

technical detail

The following drawings explain the form and structure of the inserted elements, through an elevation looking at one of the insertions straight on, and a section that cuts through the side of it to show its interior frame-work.

This plan shows the element explained in the technical detail drawings and the location of the section cuts.



Elevation AA

1:50 @ A3



Steel tension rods

to provide extra support for the inserted structures

<https://www.ancon.co.uk/products/tension-compression-systems/ancon-500-tension-systems>



Plywood sheets

1200 x 2400 mm sheets to clad the exterior (and interior where there is an internal space) of the metal frame of the inserted structures

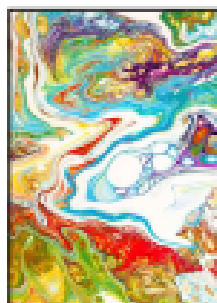
<https://www.buildingmaterials.co.uk/softwood-cdx-plywood-2440mm-x-1220mm-2-98m2>



Glass balustrade

toughened and laminated glass balustrade panels - safe and 100% transparent to create a clear and uninterrupted scene

<https://www.s3i.co.uk/glass.php>

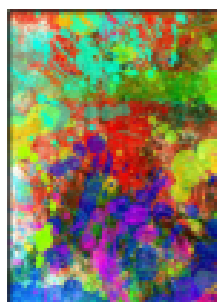


Digital Wallpaper

digital wallpaper lining the inside of the alcoves at the bottom of the structure. The wallpaper on this area will be printed in these two images.

Being durable and water resilient they will stand cleaning and wiping down

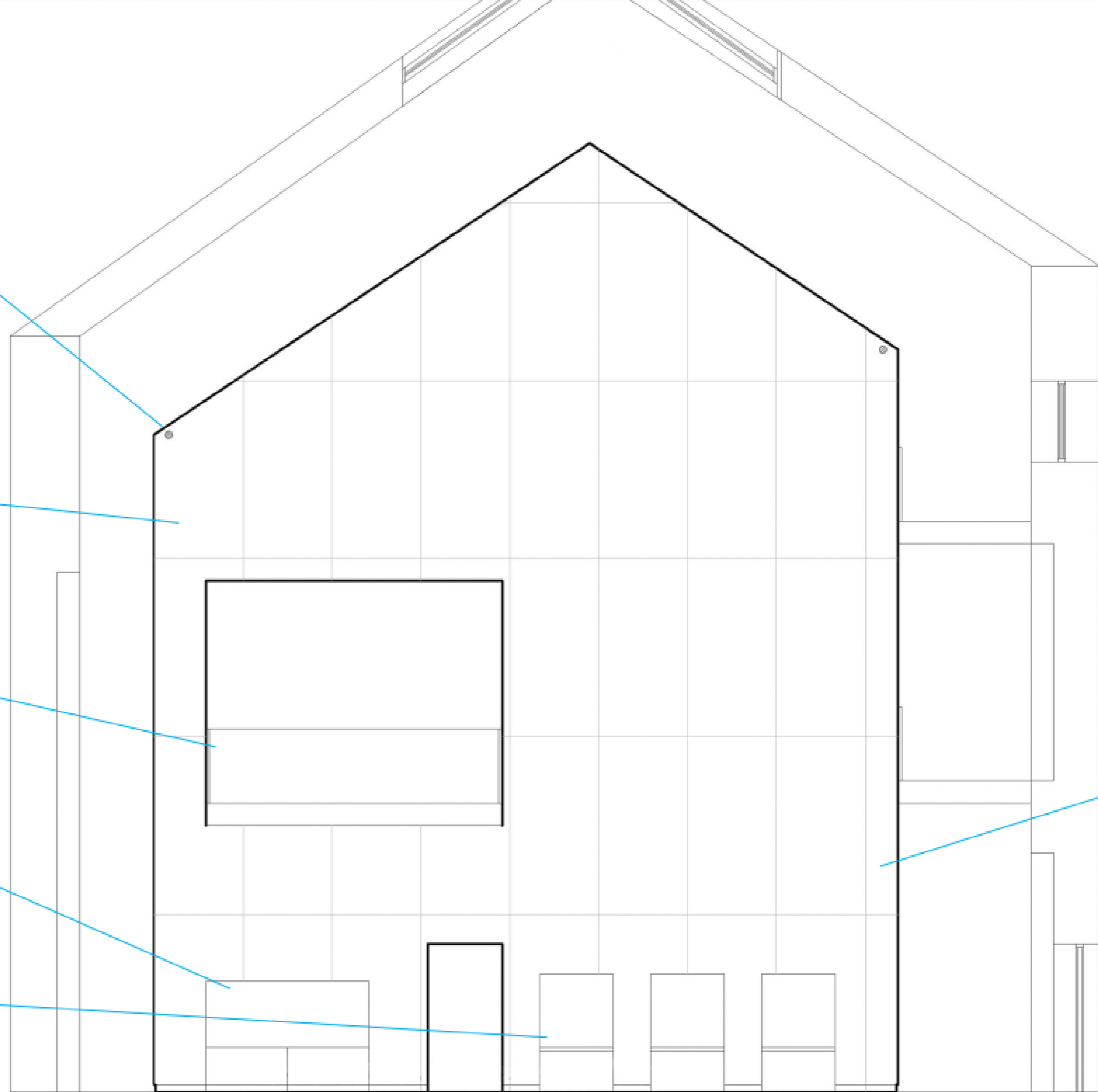
<http://www.digitalwallpaper.co.uk/index.html>



Steel square hollow bar frame

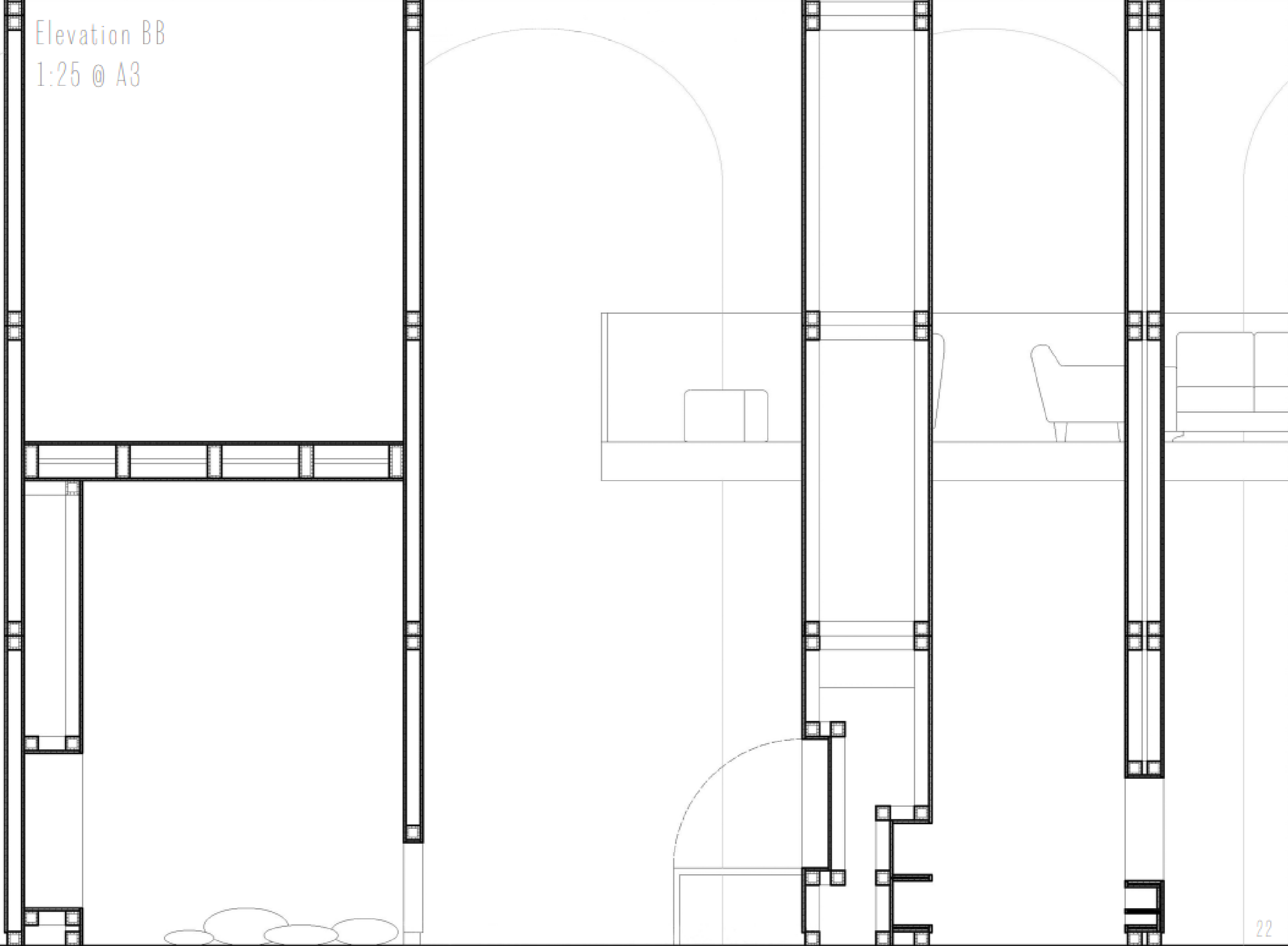
the frame for the inserted structures will be constructed as a welded metal frame. The plywood sheets will be bolted onto it to clad it. A small shadow gap of exposed metal frame will be left at the bottom.

<https://www.metalsupplies.com/products/mild-steel-hollow-section/>

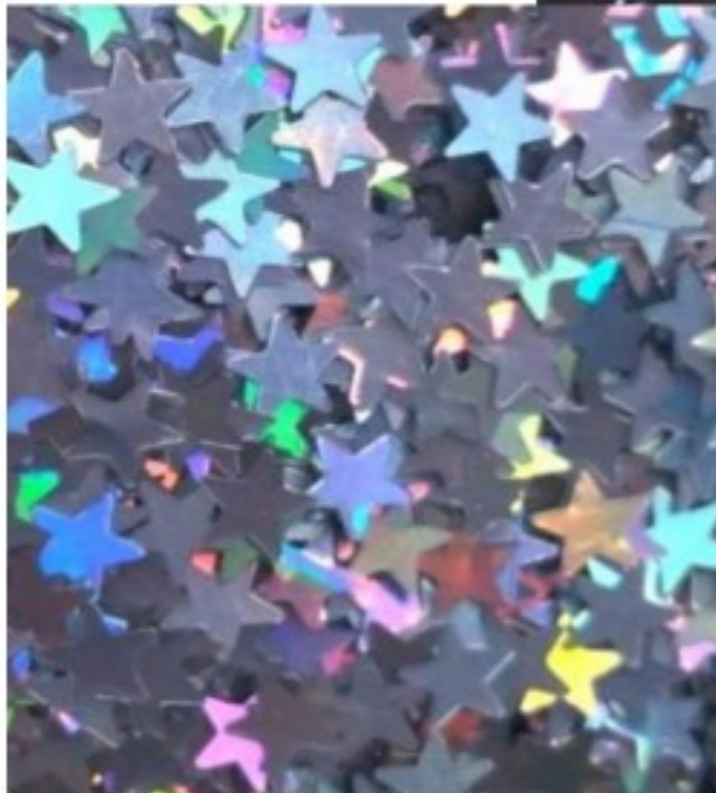
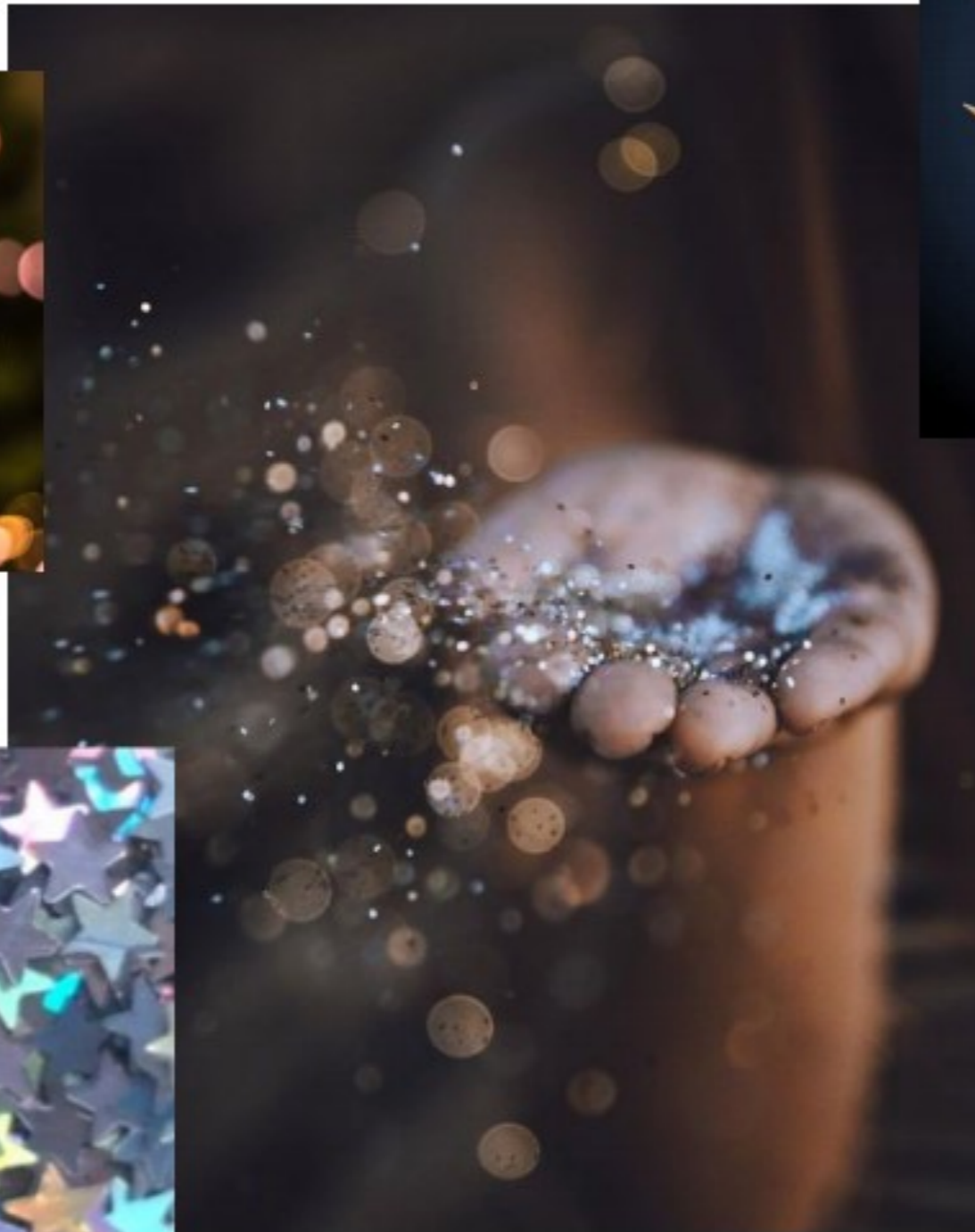


Elevation BB

1:25 @ A3



magic box





Plywood sheets

1200 x 2400 mm sheets to clad the exterior and interior of the metal frame of the inserted structure.
<https://www.buildingmaterials.co.uk/solidwood-cs-plywood-2440mm-x-1220mm-2-98m2>



Digital Wallpaper

digital wallpaper lining the inside of the alcove of the 'stage'.
Printed in this image.
<http://www.digitalwallpaper.co.uk/index.html>



Adhesive vinyl

adhesive vinyl star shaped cut outs in a metallic silver, on the floor of the stage.
<https://www.vinylwarehouse.co.uk/matt-metallic-silver-self-adhesive-vinyl-330m-select-your-perfect-size-4856-p.asp>



Digital Wallpaper

digital wallpaper lining the inside of the alcove of the 'bench seating'.
Printed in this image.
<http://www.digitalwallpaper.co.uk/index.html>



White paint

simple graphical imagery achieved in white paint. In this instance: columns (in theme with the stage) and stars.
<https://www.dulux.co.uk/en/products/dulux-light-spore-quick-dry-satinwood/h-white&brand-id=49506&color-name=Absolute%20White&color-rgb=77755&color-id=387664&ccid=1914979>



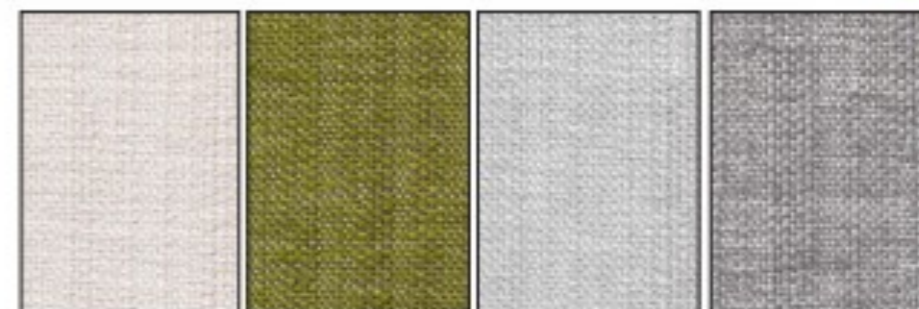
Wood flooring

a simple wood flooring will be used across the whole building. The wood panels are of a pale, light colour, slightly washed in white.
<http://www.woodfloorwarehouse.co.uk/oak-greyle-white>



Grey carpet

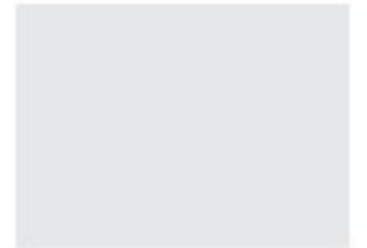
a square section of carpeted area on the floor to create a more comfortable area to sit and play.
<https://www.flooringsuperstore.com/lyon-skystraper-grey-rarpet.html>



Grey, white and green fabric upholstered cushions

both the floor cushions and the alcoved seating cushions will be made using the same fabrics. It is easily machine washed so practical and hygienic.
<https://www.veccan.com/en/dessin/fuga>

baby lounge





Plywood sheets

1200 x 2400 mm sheets to clad the exterior and interior of the metal frame of the inserted structure.
<https://www.buildingmaterials.co.uk/softwood-cdx-plywood-2440mm-x-1220mm-2-98m2>



Grey storage boxes

simple grey toy storage boxes, to fit into the cubbies on the built in plywood shelves.
<https://www.ikea.com/gb/en/p/drona-box-dark-grey-30443874/>



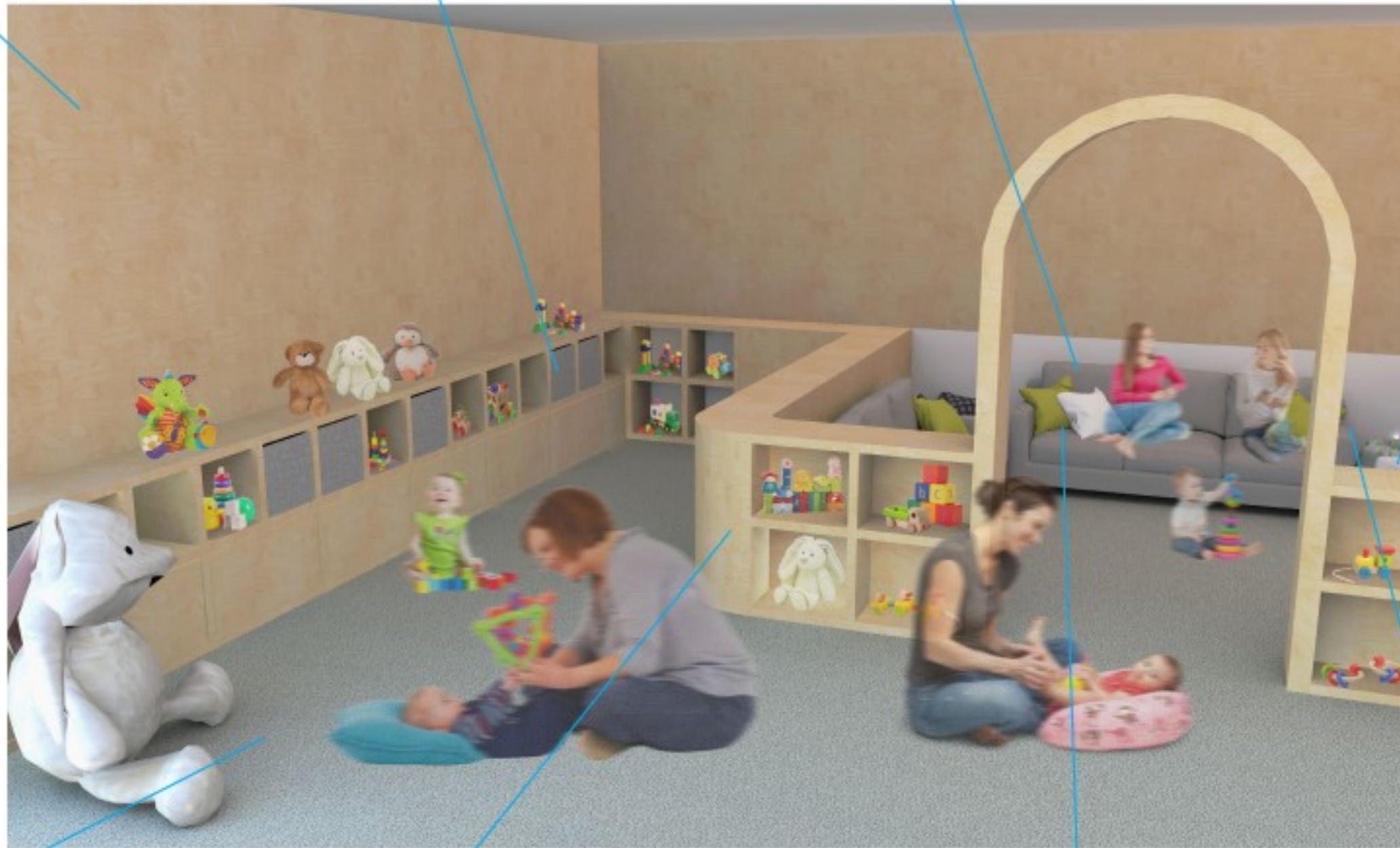
Grey sofas

two grey, two seater sofas. Simple, practical and comfortable. Durable and easy to clean as well.
<https://www.ikea.com/gb/en/p/vimle-2-seat-sofa-gunnared-medium-grey-s49284709/>



Arm chairs

two white arm chairs. Simple, practical and comfortable. Durable and easy to wash (removable cover can be placed in the washing machine).
<https://www.ikea.com/gb/en/p/ektorp-armchair-blekings-white-s58975773/>



Grey carpet

the room will be fitted with a soft grey carpet, creating a more homely space, and a comfortable area to sit and play.
<https://www.flooringsuperstore.com/lyon-skycraper-grey-carpet.html>



Plywood bespoke storage units

the space is fitted with bespoke toy storage units, made out of plywood.
<https://www.buildingmaterials.co.uk/softwood-cdx-plywood-2440mm-x-1220mm-2-98m2>



White and green cushions

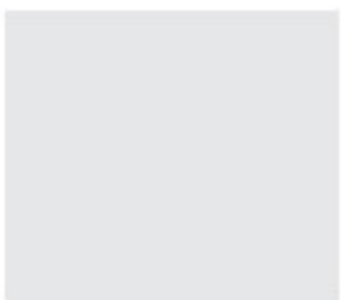
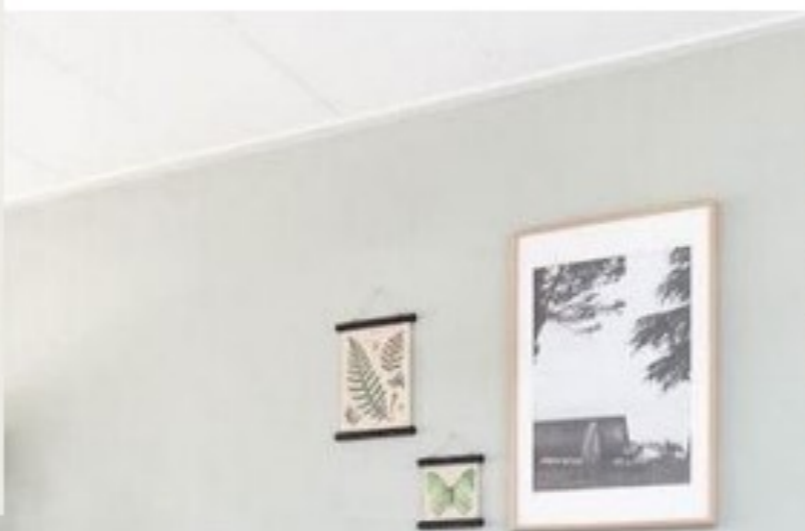
all the cushions will be made in this fabric, in these colours, in alignment with the rest of the building.
<https://www.vivacom.com/en/dessin/lugs>



White paint

the bottom one metre of the plywood wall will be painted white, to break up the plywood and prevent it from becoming overwhelming.
<https://www.dulux.co.uk/en/products/dulux-light-space-quick-dry-satinwood?h=white&brand=&id=49500&color-name=Absolute%20White&color-rgb=177555&color-id=367554&ccid=1914978>

studio flats





Plywood bespoke furnishings

the studio flats will be fully furnished in bespoke plywood fittings. These will form storage units (used as space partitions), shelves, counters and the table.
<https://www.buildingmaterials.co.uk/saftwood-cdx-plywood-2440mm-x-1220mm-2-98m2>



Grey sofa

grey, two seater sofa. Simple, practical and comfortable. Durable and easy to clean as well.
<https://www.ikea.com/gb/en/p/umle-2-seat-sofa-gunnared-medium-grey-s49284703/>



Grey storage boxes

simple grey toy storage boxes, to fit into the cubbies on the built in plywood units.
<https://www.ikea.com/gb/en/p/dromo-box-dark-grey-10443974/>



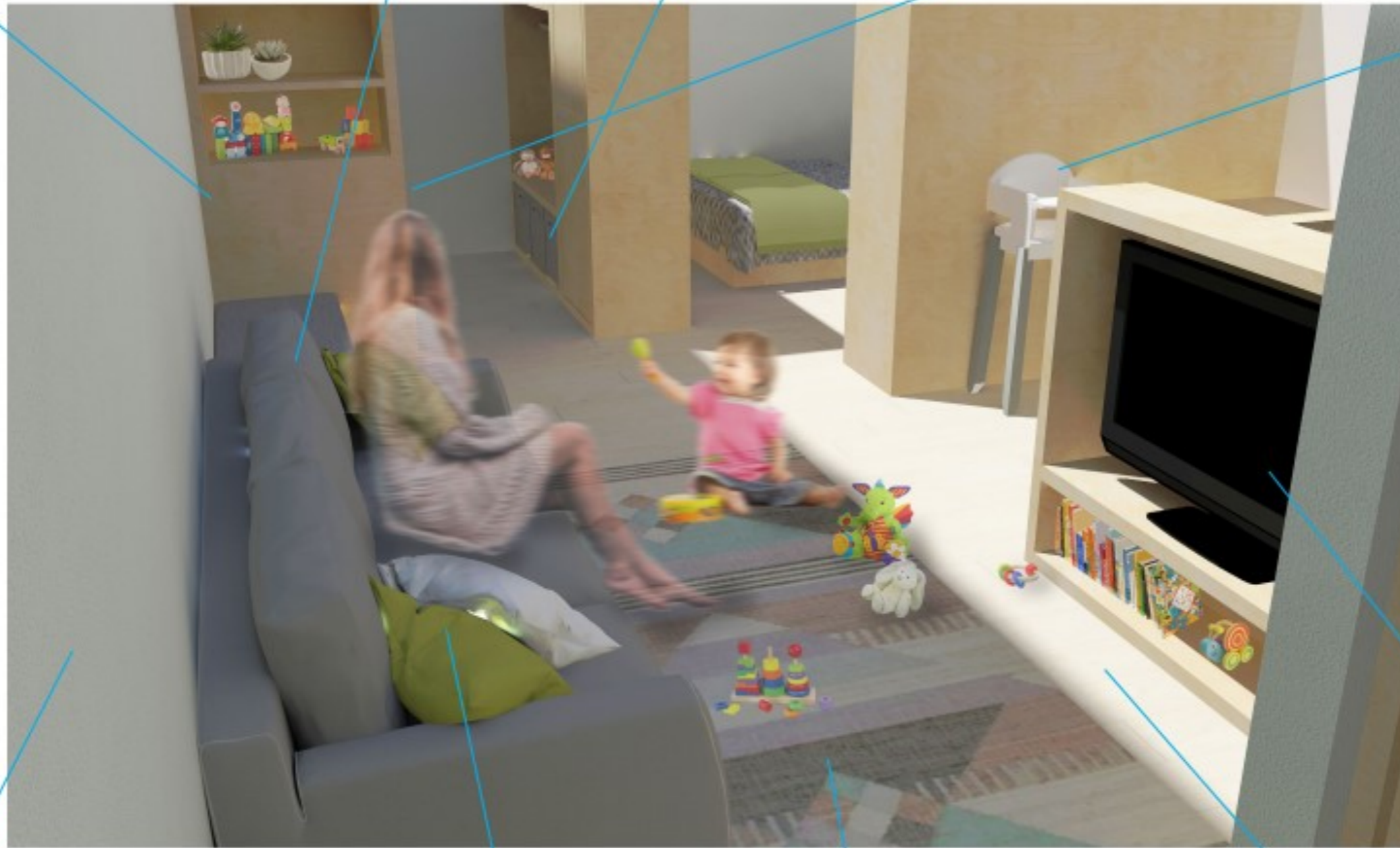
Cot / toddler bed / moses basket

various "beds" for babies / toddlers / young children.
<https://www.ikea.com/gb/en/p/sundvik-cot-white-90386550/>
<https://www.preciouslittleone.com/product-information/57/81719/babylo-natura-folding-crib-grey-melange/>
<https://www.cuckooland.com/brand/cuckooland/cubane-toddler-floor-bed>



High chair

simple, practical and compact (suitable for limited space) highchair.
<https://www.ikea.com/gb/en/p/antlop-highchair-with-tray-silver-colour-white-silver-colour-x29067293/>



White paint

the bottom one metre of the plywood wall will be painted white, to break up the plywood and prevent it from becoming overwhelming.
<https://www.dulux.co.uk/en/products/dulux-light-spacer-quick-dry-satinwood?h=white&brand=kid-49506&color-name=Absolute%20White&color-rgb=f7f5ee&color-id=367554&ccid=1914979>



White and green cushions

all the cushions will be made in this fabric, in these colours, in alignment with the rest of the building.
<https://www.vscosm.com/en/dessin/lugs>



Rug

the living room area will have a medium rug to create a softer and more comfortable surface over the wood floor
https://shop.projectnursery.com/collections/rugs/products/asteco-naturel-rug/variant=32980402255&utm_source=Pinterest&utm_medium=Social



Wood flooring

a simple wood flooring (under flooring graphics) will be used across the whole building. The wood panels are of a pale, light colour, slightly washed in white.
<http://www.woodfloorwarehouse.co.uk/ask-gentle-white>

General appliances

the flats will be fully furnished in all the necessary general appliances, including television, oven, hob, microwave etc.

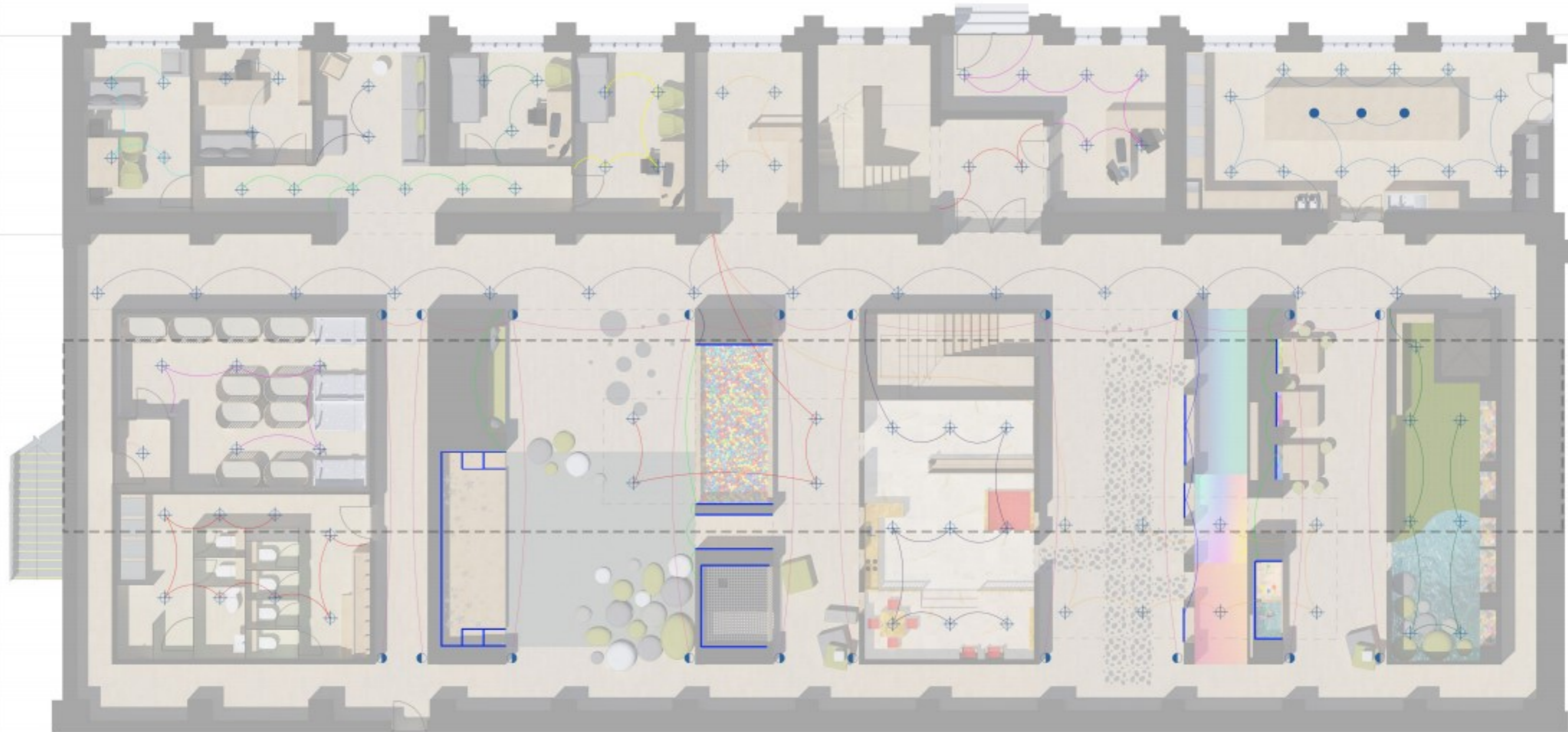
lighting rationale

The desired lighting atmosphere of the space is even and bright. The space needs to feel welcoming and comfortable, so needs to be well lit and bright with warm lighting (avoiding cool lighting), as this is most like the lighting found in a residential home.

The building has few windows, apart from at the front of the building. To address this, I have redesigned the roof so that there is a continuous line of skylights along the apex of the roof of the old atrium area. The studio flats are all located along the front of the building so that they all have windows and receive natural lights. This is vital for the flats as they must feel comfortable and homely. It can become very depressing living in a space with no windows or view to outside. As my space has a focus on wellbeing, this would be very counter-productive.

Much of the space will use very simple and practical recessed spot lights, to evenly light the space and make it easy and safe to carry out tasks (playing included). This will be complimented by the use of LED strips, floor recessed up-lights, and some pendant lights.

lighting plan - ground floor



 ceiling recessed spot light

 floor recessed up light

 skylights

 pendant lights *

 LED strip



scale bar:

4 metres

lighting specification



Ceiling recessed spot light

Product: DOT00.spot Manufacturer: H. Waldmann Interior Lighting
"LED downlight for illumination of workplaces and rooms"

These recessed down lights will be used throughout the entire building to create even, bright lighting throughout the space. This is very important for my scheme as it creates a bright, positive and comfortable environment to use. It is also practical for carrying out tasks (i.e. playing) safely.

<https://www.architonic.com/en/product/h-waldmann-dot00-spot/1371836>



Pendant lights *

Product: Circus cemento white Manufacturer: IN-ES.ARTDESIGN Interior Lighting
"Pendant / E27 (max 70w power light). ø40x22,5 cm. Base: ø12x4,5 cm. Materials: laprene, nylon, nebulite, cement effect paint"

There will be three of these pendant lights hanging over the island in the kitchen, to both provide task lighting for food preparation happening on the kitchen surface and provide a decorative feature.

<https://www.architonic.com/en/product/in-es-artdesign-circus-cemento-white/1408129>



Floor recessed up light

Product: L300 | 316 marine grade Manufacturer: MP Lighting Designer: Mirek Pospisil, Patek Yeung, Theresa Hutton Pun
"Half shield in-grade luminaire. Interior/ Exterior. Mounting: floors, walls, or ceilings. Material: solid anodized aluminum or 316 marine grade."

These floor recessed uplights will be used throughout the space, primarily on the ground floor at the corners of each of the inserted elements to illuminate them. The half cover ensures that light isn't lost and wasted and that children don't get dazzles from the light beam. They will also be used in the corner of the mezzanine platforms on the first and second floor.

<https://www.architonic.com/en/product/mp-lighting-l300-316-marine-grade/1409719>



LED strip (and diffuser bracket)

Product: XM1ROW/5MT Manufacturer: Panzeri Interior Lighting

"6000cm x 10cm. STRIP ROLL 1 ROW 5 MT 3000K / 4000K Ra 80 24V frazionabile ogni / Divisible every 100 mm"

Warm LED strip lighting, inlaid in a bracket with light diffuser so as to create an even light, to be used to highlight certain areas. This includes the staircase in the middle insertion, around the steps and the walls of the 'stage' alcove, throughout the 'dragon lair' alcoves, in the windows of 'the village', the alcoves in the 'wizard workshop'

<https://www.architonic.com/en/product/panzeri-xm1row-5mt/1228387>



Pendant light **

Product: *Wish pendant light* Manufacturer: *Lumini* Designer: *Fernando Prado* Interior Lighting
"wish s / pendant light. 1 x a60 max, 100 W - e27. h adjustable, Ø shade 40 cm"

These simple pendant lights will be used centrally in the living areas of the studio flats, to create more of a homely feel in them, rather than a slightly more clinical feel which might have been a risk if the flats were lighted purely through recessed downlights.

<https://www.architonic.com/en/product/lumini-wish-pendant-light/1091900>



Desk lamp

Product: *Laito Desk Lamp* Manufacturer: *SEEDDESIGN* Designer: *Chao-Cheng Chen* Interior Lighting
"Size: 21 x 14 x 18 cm (LxWxH)."

This desk lamp will be used in the bedrooms where there is a bedside table. Simple in design and colour so as to go with the rest of the scheme. Intended as a practical tasklight, as a bedside reading light.

<https://www.architonic.com/en/product/seeddesign-laito-desk-lamp/1290990>



Wall mounted task light

Product: *Original 1227™ Mini Wall Light* Manufacturer: *Anglepoise* Designer: *George Carwardine* Interior Lighting
"Stand out features include a rotating steel shade, chrome fittings, and a die-cast aluminium wall sconce, complete with an integral switch. Proof that great things don't have to come in large packages. Materials: Gloss paint finish, Steel shade, Chrome plated fittings, Die Cast aluminium wall sconce. Product Dimensions: Shade diameter: 13cm, Shade height: 14cm, Max reach: 28cm (from wall to shade), Wall plate: 8 x 8cm"

These wall mounted reading lights will be used in the bedrooms where there is no bedside table (this is the situation in the slightly smaller flats).

<https://www.architonic.com/en/product/anglepoise-original-1227-mini-wall-light/1384385>



Floor recessed up light * (exterior)

Product: *I300 / 316 marine grade* Manufacturer: *MP Lighting* Designer: *Mirek Pospisil, Patek Yeung, Theresa Hutton Pun*
"Half shield in-grade luminaire. Interior/ Exterior. Mounting: floors, walls, or ceilings. Material: solid anodized aluminum or 316 marine grade."

Exterior grade, floor recessed up lights to be used by the door and around the seating area in the roof garden. This is a safety measure for those wishing to access the roof when it is darker, and to create a pleasant and useable space on darker days and in the evenings.

<https://www.architonic.com/en/product/mp-lighting-i300-316-marine-grade/1409719>

image references

<https://www.google.com/maps/d/u/0/edit?mid=14415neTYQhGEUVHAMPC010kF71hgR09y&ll=54.26479978492215%2C-3.4359724999999344&z=5> <https://www.google.com/maps/d/u/0/edit?mid=14415neTYQhGEUVHAMPC010kF71hgR09y&ll=54.26479978492215%2C-3.4359724999999344&z=5>

<https://www.quora.com/What-does-this-icon-mean-in-London>

<https://www.pngwave.com/png-clip-art-xwdcp>

<https://exeter.gov.uk/planning-services/permissions-and-applications/related-documents/?appref=10/2024/FUL>

<https://exeter.gov.uk/planning-services/permissions-and-applications/related-documents/?appref=10/2024/FUL>

<https://exeter.gov.uk/planning-services/permissions-and-applications/related-documents/?appref=10/2024/FUL>

<https://exeter.gov.uk/planning-services/permissions-and-applications/related-documents/?appref=10/2024/FUL>

<https://exeter.gov.uk/planning-services/permissions-and-applications/related-documents/?appref=10/2024/FUL>

<http://journaleverleighfurniture.neeseesdresses.ru/7015308-46-ideas-for-plywood-furniture-wardrobe-storage-inn4.html>

<http://kailanibedroom.mimoranda.ru/3843794-bedroom-modern-white-grey-colour-schemes-56-super-ideas-inn14.html>

<https://www.ikea.com/gb/en/p/brimnes-day-bed-w-2-drawers-2-mattresses-white-malfors-firm-s19129871/>

https://www.iamfy.co/product/kamala-rug-in-white?utm_source=Pinterest&utm_medium=Paid&utm_campaign=UK_Pinterest_Rugs&utm_term=Actalike&pp=1

<https://www.thisiscolossal.com/2018/06/rainbow-roads/>

<https://i.pinimg.com/originals/12/85/41/128541baabe2fbcc70c4f93ba5c9a682.jpg>

<https://blog.frontiersin.org/2018/05/02/psychology-playful-boys-gender-differences-children-education/>

<https://wegrow.com/>

<https://www.goood.cn/aranya-childrens-art-classroomchina-by-odd.htm>

<https://upgradesign.blog/2018/01/27/how-to-transform-a-space-with-plywood/>

<https://www.sfgirlbybay.com/2015/04/28/calm-cool-and-collected/>

<http://journaleverleighfurniture.neeseesdresses.ru/7015308-46-ideas-for-plywood-furniture-wardrobe-storage-inn4.html>

<https://www.dwell.com/article/an-unused-garage-is-transformed-into-a-light-filled-backyard-studio-6a34f783/6295322474529054720>

<https://www.sfgirlbybay.com/2015/04/28/calm-cool-and-collected/>

<https://www.cocokelley.com/2016/05/best-neutral-paint-colors-guide/>

<https://i.pinimg.com/originals/71/e1/4f/71e14f4bee936e794fb3af0e8baaldab0.jpg>

https://www.etsy.com/listing/699816907/silver-star-glitter-butterfly-glitter?ref=shop_home_active_3&pro=1&frs=1

<https://www.pinterest.co.uk/pin/484981453595773283/>

<https://www.pinterest.co.uk/pin/856176579138717280/>

https://pngtree.com/freebackground/magic-forest-mushrooms-background_374697.html

<https://www.redbubble.com/i/framed-print/Abstract-Rainbow-by-pugmom4/15764256.8QE1M>

<https://www.sketchuptextureclub.com/textures/architecture/wood/plywood>

https://www.123rf.com/photo_38145726_green-fabric-texture-for-background-texture-sack-sacking-country-background.html

<https://www.ilovewallpaper.co.uk/wallpaper-c1/patterned-wallpaper-c2/linen-texture-fabric-effect-wallpaper-grey-p6747>

<https://www.shutterstock.com/search/white+paint+texture>

https://www.123rf.com/photo_41120595_abstract-painting-with-beautiful-colors.html

<https://alcochina.en.made-in-china.com/product/kNhJquvcLLWs/China-Stainless-Steel-Tension-Rod.html>

<https://www.buildingmaterials.co.uk/softwood-cdx-plywood-2440mm-x-1220mm-2-98m2>

<https://www.s3i.co.uk/glass.php>

<http://www.digitalwallpaper.co.uk/index.html>

<https://www.metalsupplies.com/products/mild-steel-hollow-section/>

<https://unsplash.com/collections/365720/sparkles>

<http://www.thehoodwitch.com/blog/2019/5/18/manifesting-your-dreams-solar-return-magic>

<https://www.dreamstime.com/illustration/magic-box.html>

<https://www.vinylwarehouse.co.uk/matt-metallic-silver-self-adhesive-vinyl-390m--select-your-perfect-size-4856-p.asp>

<https://www.flooringsuperstore.com/lyon-skyscraper-grey-carpet.html>

<http://www.woodfloorwarehouse.co.uk/oak-gentle-white>

<https://www.hbdragon.com/main/content/treasure-dragon>

<https://vectortoons.com/products/a-friendly-dragon-and-treasure-cave-background>

<https://vectortoons.com/products/treasure-cave-background>

https://simpsonstappedout.fandom.com/wiki/Burns_Dragon%27s_Pile_of_Treasure

<https://www.barrons.com/articles/etfs-to-play-the-surge-in-gold-prices-51561114801>

https://www.huck-net.co.uk/playground-equipment/scramble-nets-climbing-ropes-ladders-fittings_13505/

https://uk.orakel.com/products/commercial-play-products/playpool-balls?gclid=CjwKCAjwvtX08RAFEiwAGWJyZ0yWacqELW00SPMpEXcHBRnYIRs1FBVkmXWu1PVOjD1VKiOkYKUSzhoC5AAQAvD_BwE

https://www.shutterstock.com/search/medieval%2Bcastle%2Broom?image_type=vector&safe=true&search_source=base_related_searches§ion=1

<https://www.dreamstime.com/castle-interior-concept-castle-interior-concept-flat-scenes-set-king-dining-hall-throne-ballrooms-isolated-vector-image143570622>

<https://www.gamedevmarket.net/asset/royal-throne-medieval-hall-in-cartoon-style-vector-illustration/>

<https://www.istockphoto.com/gb/photos/thailand-tiled-poster>
https://bigappleacademy.com/7/7_22_Rhinooster/
https://www.clitche.com/index.php?main_page=product_info&products_id=688885
<https://www.publicdomainpictures.net/jp/view-image.php?image=201692&picture=>
<https://depositphotos.com/144771289/stock-photo-fairy-tale-village-in-a.html>
<https://www.dreamstime.com/small-fairy-tale-town-fiction-backdrop-concept-art-realistic-illustration-video-game-digital-cg-artwork-industry-scenery-small-image135286496>
https://es.123rf.com/photo_17823217_tel%C3%B3n-de-fondo-pintado-de-la-aldea-medieval.html
<https://riaricis1795.com/>
<https://wallpaperplay.com/board/flying-wv-wallpapers>
<https://www.pinterest.co.uk/pin/70157706676307241/>
<https://wallpaperset.com/rainbow-wallpapers>
<https://www.artstation.com/artwork/4E0o2>
<https://happydayout.tumblr.com/post/30254828837>
<https://www.flickr.com/photos/52278143@N02/10390570726>
<http://www.aljanh.net/strokes-wallpapers/762038248.html>
https://ru.123rf.com/%D0%A4%D0%BE%D1%82%D0%BE-%D1%81%D0%BE-%D1%81%D1%82%D0%BE%D0%BA%D0%80/rainbow__waves.html?imgtype=1&alttext=1&orderby=2&stt=n5o3f4qcy22x60gy5l
<https://www.pinterest.co.uk/pin/576671927265620390/>
<https://www.normann-copenhagen.com/en/Products/Furniture/Poufs--Stools/Tap-Stool-Oak-Green-602254>
<https://www.ebay.com/itm/Fairytale-Forest-Path-Baby-Photography-Backgrounds-3x5ft-Vinyl-Photo-Backdrops/252458225437?hash=item3ac7aef1d:g:yioAADSzwgBY0vIS>
<https://i.pinimg.com/originals/d5/d1/d3/d5d1d333b8306a679d850deb7b677830.jpg>
<https://www.pinterest.co.uk/pin/404972191493766392/>
http://motorostroitel.com.ua/images/article/2017_11_15/%D0%A7%D0%85%D1%80%D0%82%D0%85%D0%8D%D1%8C%202017.pdf
<https://www.etsy.com/uk/listing/695814420/wallpaperadhesive-vinylmagical-forest>
<https://gr.pinterest.com/pin/38421403057227171/>
<https://www.architonic.com/en/product/object-carpet-tosh-1417-lemon/1034050>
<https://wallpaperaccess.com/colorful-flowers-phone>
https://www.circu.net/collections/fantasy-air-collection?utm_source=Pinterest&utm_medium=CC&utm_campaign=PinterestCC&utm_term=hsantos&utm_content=week25
https://www.etsy.com/uk/listing/722269853/?ref=landingpage_similar_listing_top-1
https://www.etsy.com/listing/594672829/baby-bear-print-gender-neutral-print?item_group_id=PG_594672829
<http://uberkid.net/2017/01/30/wildfire-teepees-and-hux-baby-at-monkey-mccoy/>
<https://www.flooringsuperstore.com/catalogsearch/result/?q=lyon+skyscraper+grey+carpet+371772&amnoroute>
<https://www.ikea.com/gb/en/p/droena-box-dark-grey-10443974/>
<https://www.ikea.com/gb/en/p/vimle-2-seat-sofa-gunnared-medium-grey-s49284709/>
<https://www.ikea.com/gb/en/p/ektorp-armchair-blekinge-white-s59875773/>
<https://www.brit.co/home-decor-color-trends-2017/>
<https://www.ikea.com/gb/en/p/sundvik-cot-white-90385550/>
<https://www.preciouslittleone.com/product-information/57/81719/babylo-natura-folding-crib-grey-melange/>
<https://www.cuckooland.com/brand/cuckooland/cabane-toddler-floor-bed>
<https://www.ikea.com/gb/en/p/antlop-highchair-with-tray-silver-colour-white-silver-colour-s29067293/>
https://shop.projectnursery.com/collections/rugs/products/azteca-natural-rug?variant=33980402255&utm_source=Pinterest&utm_medium=Social
<https://www.architonic.com/en/product/in-es-artdesign-cyrus-cemento-white/1408129>
<https://www.architonic.com/en/product/mp-lighting-l300-316-marine-grade/1409719>
<https://www.architonic.com/en/product/h-waldmann-dotoo-spot/1371836>
<https://www.architonic.com/en/product/lumini-wish-pendant-light/1091900>
<https://www.architonic.com/en/product/seeddesign-laito-desk-lamp/1290990>
<https://www.architonic.com/en/product/anglepoise-original-1227-mini-wall-light/1384385>
<https://www.architonic.com/en/product/mp-lighting-l300-316-marine-grade/1409719>

other images used within my photoshop visuals have been sourced from google images